

Dealer: _____
 Siding Color: _____ Fiberglass
 Decal Color: _____
 S.G. Color: _____
 Customer: _____
 Order Date: _____

Frame Options

MFG: _____

Galvanized

Yes: No:

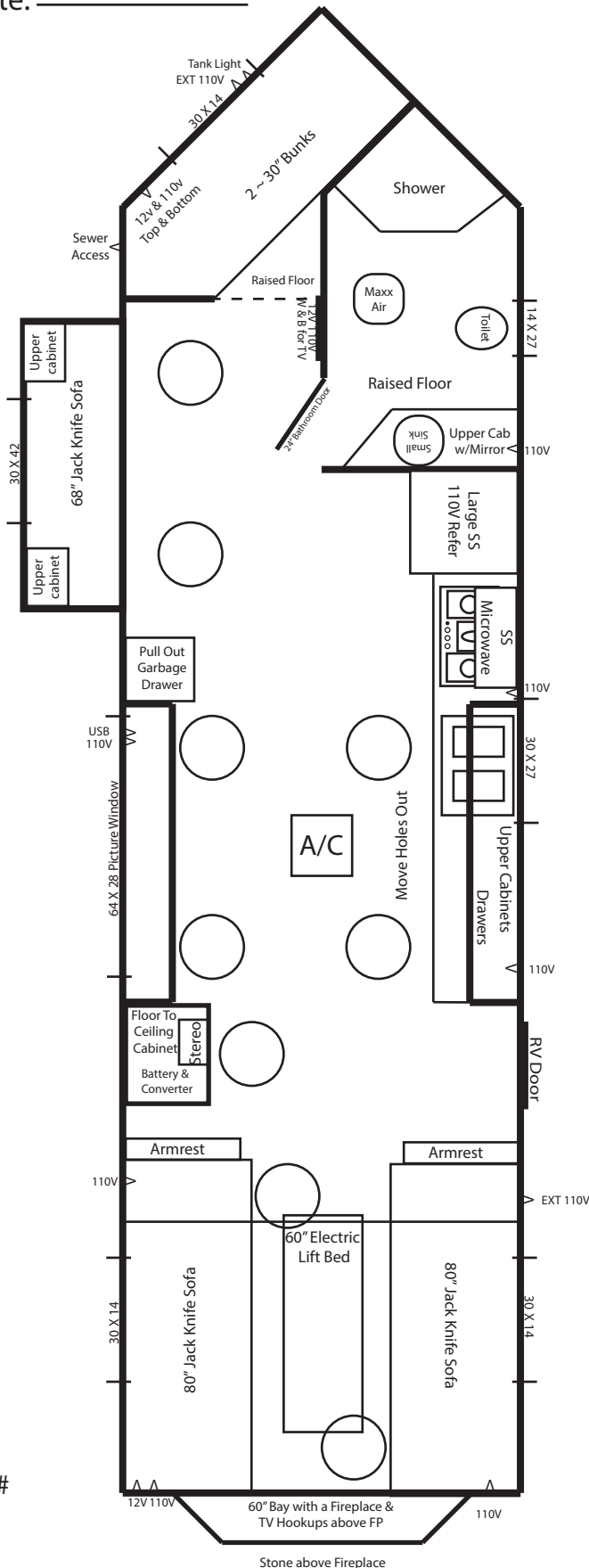
8 X 28V Eagle EXT

~ 2023

- Dual Axle Heavy Duty Hydraulic Frame
- Arctic Insulation
- 90" Sidewalls
- 9 Holes with Lights
- Tan Panel Interior
- Walnut Stained Cabinets
- Cove Trim
- Flat Ceiling
- Brown Vinyl Wood-Look Flooring
- RV Door
- A/C w/ Thermostat
- Maxx Air Fan
- Power Slideout Rooms

- LED Package
- Can Ceiling Lights w/Dimmer Switch
- 2 ~ Wire & Brace for TV
- Digital TV Antenna
- Wire for Portable Satellite
- Stereo w/4 speakers
- 12V Recepts
- 110V Recepts
- Exterior Speakers w/Lights
- LED Striplights at Ceiling

- Bathroom w/toilet & shower
- Vanity w/Sink in Bathroom
- Stone Backsplash in Whole Kitchen
- Furion Cooktop & Oven
- SS Range hood w/vent
- SS Double Sink
- SS Microwave
- Large SS Refrigerator
- Flat Panel Doors w/New Hinges
- Brown cushions
- Brown Mini Blinds
- 35,000 BTU Furnace
- 3 ~ Jack Knife Sofas
- 60" Electric Lift Bed
- 2 ~ 30" Bunks
- 21' Power Awning
- 60" Bay w/Fireplace & TV Hookups
- Picture Window
- 4" Interior Stoneguard
- New Countertop



Production # _____
